

CROSS-SECTION

- 1. Transparent wear layer
- 2. High resolution decor film
- 3. Vinyl backing
- 4. SPC Core (Stone Polymer Composite)
- 5. Click System
- 6. Vinyl backing
- 7. Integrated noise-absorbing underlayment

KAMPTAL

- ◇ Natural wood look
- ◇ Can be laid on large areas (400 m²)
- ◇ Water resistant
- ◇ Only 6,5 mm mounting height
- ◇ Vinyl- and wear layer 1,2/0,55 mm
- ◇ Format 1524 x 228 mm – Large size!
- ◇ Carton content = 5 planks = 1,737 m²
- ◇ Suitable for electric underfloor heating
- ◇ Patented click connection
- ◇ Low Emission (Certified A +)
- ◇ Integrated underlay mat
- ◇ Step & room sound reduction (18 dB)
- ◇ Utilization class 32
- ◇ Phthalate and plasticizer free

Note before laying:

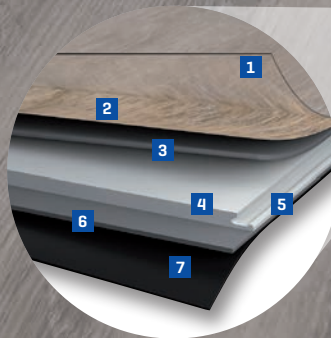
- Amount needed + 10% of the area.
- Subfloor clean, hard, flat, stable and firm.
- Uneven surface = max 3 mm per 1,2 m.
- Acclimatize the planks horizontally in the room for at least 48h!
- **Important:** Room temperature = floor temperature during installation
- Use temperature 18°C to 24°C.

Note during laying:

- Linoleum and wood-based subfloors require decoupling with 0,2 mm PE foil!
- The planks must be properly clicked in!
- Provide expansion joints to walls and fixed objects of 6-8 mm.
- Max 20 x 20 m (400 m²) without expansion joints.
- Do not use an additional underlay mat.

Article No.	Decor No.	Description	EAN	Pack/Pallet
106203600	MO8556L-12	Strong SPC Multilayer Plus, Kamptal	7640165925225	36

The pictures may differ in color from the original product.



CROSS-SECTION

- 1. Transparent wear layer
- 2. High resolution décor film
- 3. Vinyl backing
- 4. SPC Core (Stone Polymer Composite)
- 5. Click System
- 6. Vinyl backing
- 7. Integrated noise-absorbing underlayment

BÖDMEREN

- ◇ Natural wood look
- ◇ Can be laid on large areas (400 m²)
- ◇ Water resistant
- ◇ Only 6,5 mm mounting height
- ◇ Vinyl- and wear layer 1,2/0,55 mm
- ◇ Format 1524 x 228 mm – Large size!
- ◇ Carton content = 5 planks = 1,737 m²
- ◇ Suitable for electric underfloor heating
- ◇ Patented click connection
- ◇ Low Emission (Certified A +)
- ◇ Integrated underlay mat
- ◇ Step & room sound reduction (18 dB)
- ◇ Utilization class 32
- ◇ Phthalate and plasticizer free

Note before laying:

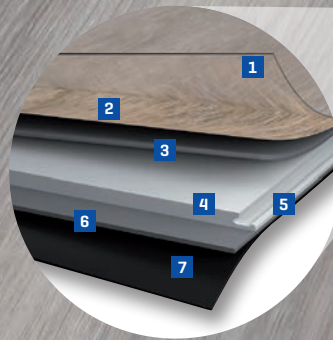
- Amount needed + 10% of the area.
- Subfloor clean, hard, flat, stable and firm.
- Uneven surface = max 3 mm per 1,2 m.
- Acclimatize the planks horizontally in the room for at least 48h!
- **Important:** Room temperature = floor temperature during installation
- Use temperature 18°C to 24°C.

Note during laying:

- Linoleum and wood-based subfloors require decoupling with 0,2 mm PE foil!
- The planks must be properly clicked in!
- Provide expansion joints to walls and fixed objects of 6-8 mm.
- Max 20 x 20 m (400 m²) without expansion joints.
- Do not use an additional underlay mat.

The pictures may differ in color from the original product.

Article No.	Decor No.	Description	EAN	Pack/Pallet
106203601	MO625L-1	Strong SPC Multilayer Plus, Böldmeren	7640165925232	36



CROSS-SECTION

- 1. Transparent wear layer
- 2. High resolution décor film
- 3. Vinyl backing
- 4. SPC Core (Stone Polymer Composite)
- 5. Click System
- 6. Vinyl backing
- 7. Integrated noise-absorbing underlayment

HEXENBERG

- ◇ Natural wood look
- ◇ Can be laid on large areas (400 m²)
- ◇ Water resistant
- ◇ Only 6,5 mm mounting height
- ◇ Vinyl- and wear layer 1,2/0,55 mm
- ◇ Format 1524 x 228 mm – Large size!
- ◇ Carton content = 5 planks = 1,737 m²
- ◇ Suitable for electric underfloor heating
- ◇ Patented click connection
- ◇ Low Emission (Certified A +)
- ◇ Integrated underlay mat
- ◇ Step & room sound reduction (18 dB)
- ◇ Utilization class 32
- ◇ Phthalate and plasticizer free

Note before laying:

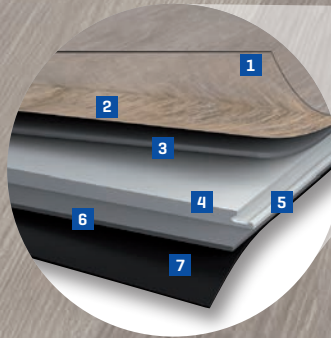
- Amount needed + 10% of the area.
- Subfloor clean, hard, flat, stable and firm.
- Uneven surface = max 3 mm per 1,2 m.
- Acclimatize the planks horizontally in the room for at least 48h!
- **Important:** Room temperature = floor temperature during installation
- Use temperature 18°C to 24°C.

Note during laying:

- Linoleum and wood-based subfloors require decoupling with 0,2 mm PE foil!
- The planks must be properly clicked in!
- Provide expansion joints to walls and fixed objects of 6-8 mm.
- Max 20 x 20 m (400 m²) without expansion joints.
- Do not use an additional underlay mat.

The pictures may differ in color from the original product.

Article No.	Decor No.	Description	EAN	Pack/Pallet
106203602	MO8556L-9	Strong SPC Multilayer Plus, Hexenberg	7640165925249	36



CROSS-SECTION

- 1. Transparent wear layer
- 2. High resolution décor film
- 3. Vinyl backing
- 4. SPC Core (Stone Polymer Composite)
- 5. Click System
- 6. Vinyl backing
- 7. Integrated noise-absorbing underlayment

GRODA

- ◇ Natural wood look
- ◇ Can be laid on large areas (400 m²)
- ◇ Water resistant
- ◇ Only 6,5 mm mounting height
- ◇ Vinyl- and wear layer 1,2/0,55 mm
- ◇ Format 1524 x 228 mm – Large size!
- ◇ Carton content = 5 planks = 1,737 m²
- ◇ Suitable for electric underfloor heating
- ◇ Patented click connection
- ◇ Low Emission (Certified A +)
- ◇ Integrated underlay mat
- ◇ Step & room sound reduction (18 dB)
- ◇ Utilization class 32
- ◇ Phthalate and plasticizer free

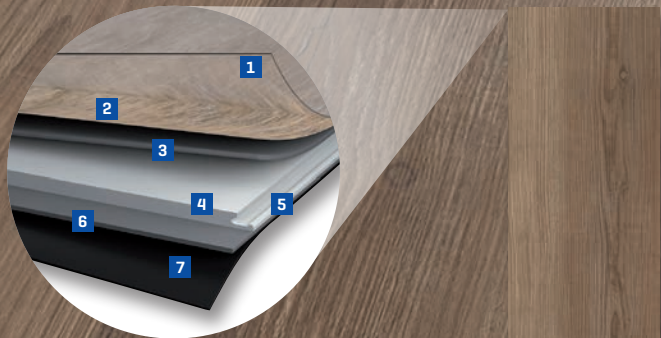
Note before laying:

- Amount needed + 10% of the area.
- Subfloor clean, hard, flat, stable and firm.
- Uneven surface = max 3 mm per 1,2 m.
- Acclimatize the planks horizontally in the room for at least 48h!
- **Important:** Room temperature = floor temperature during installation
- Use temperature 18°C to 24°C.

Note during laying:

- Linoleum and wood-based subfloors require decoupling with 0,2 mm PE foil!
- The planks must be properly clicked in!
- Provide expansion joints to walls and fixed objects of 6-8 mm.
- Max 20 x 20 m (400 m²) without expansion joints.
- Do not use an additional underlay mat.

Article No.	Decor No.	Description	EAN	Pack/Pallet
106203603	MO8624L-2	Strong SPC Multilayer Plus, Groda	7640165925256	36



CROSS-SECTION

- 1. Transparent wear layer
- 2. High resolution décor film
- 3. Vinyl backing
- 4. SPC Core (Stone Polymer Composite)
- 5. Click System
- 6. Vinyl backing
- 7. Integrated noise-absorbing underlayment

HAINICH

- ◇ Natural wood look
- ◇ Can be laid on large areas (400 m²)
- ◇ Water resistant
- ◇ Only 6,5 mm mounting height
- ◇ Vinyl- and wear layer 1,2/0,55 mm
- ◇ Format 1524 x 228 mm – Large size!
- ◇ Carton content = 5 planks = 1,737 m²
- ◇ Suitable for electric underfloor heating
- ◇ Patented click connection
- ◇ Low Emission (Certified A +)
- ◇ Integrated underlay mat
- ◇ Step & room sound reduction (18 dB)
- ◇ Utilization class 32
- ◇ Phthalate and plasticizer free

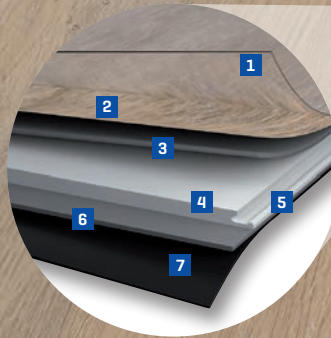
Note before laying:

- Amount needed + 10% of the area.
- Subfloor clean, hard, flat, stable and firm.
- Uneven surface = max 3 mm per 1,2 m.
- Acclimatize the planks horizontally in the room for at least 48h!
- **Important:** Room temperature = floor temperature during installation
- Use temperature 18°C to 24°C.

Note during laying:

- Linoleum and wood-based subfloors require decoupling with 0,2 mm PE foil!
- The planks must be properly clicked in!
- Provide expansion joints to walls and fixed objects of 6-8 mm.
- Max 20 x 20 m (400 m²) without expansion joints.
- Do not use an additional underlay mat.

Article No.	Decor No.	Description	EAN	Pack/Pallet
106203604	ORGW-624L-1	Strong SPC Multilayer Plus, Hainich	7640165925263	36



CROSS-SECTION

- 1. Transparent wear layer
- 2. High resolution décor film
- 3. Vinyl backing
- 4. SPC Core (Stone Polymer Composite)
- 5. Click System
- 6. Vinyl backing
- 7. Integrated noise-absorbing underlayment

THIEMSBURG

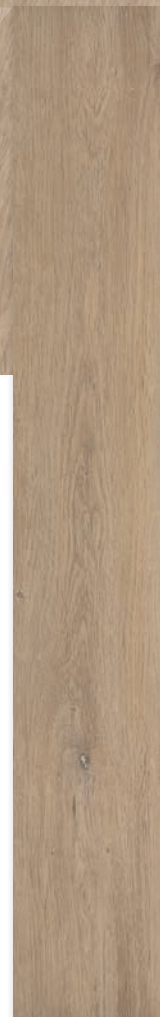
- ◇ Natural wood look
- ◇ Can be laid on large areas (400 m²)
- ◇ Water resistant
- ◇ Only 6,5 mm mounting height
- ◇ Vinyl- and wear layer 1,2/0,55 mm
- ◇ Format 1524 x 228 mm – Large size!
- ◇ Carton content = 5 planks = 1,737 m²
- ◇ Suitable for electric underfloor heating
- ◇ Patented click connection
- ◇ Low Emission (Certified A +)
- ◇ Integrated underlay mat
- ◇ Step & room sound reduction (18 dB)
- ◇ Utilization class 32
- ◇ Phthalate and plasticizer free

Note before laying:

- Amount needed + 10% of the area.
- Subfloor clean, hard, flat, stable and firm.
- Uneven surface = max 3 mm per 1,2 m.
- Acclimatize the planks horizontally in the room for at least 48h!
- **Important:** Room temperature = floor temperature during installation
- Use temperature 18°C to 24°C.

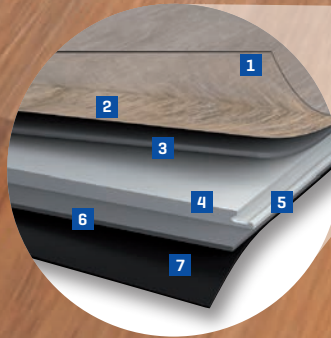
Note during laying:

- Linoleum and wood-based subfloors require decoupling with 0,2 mm PE foil!
- The planks must be properly clicked in!
- Provide expansion joints to walls and fixed objects of 6-8 mm.
- Max 20 x 20 m (400 m²) without expansion joints.
- Do not use an additional underlay mat.



The pictures may differ in color from the original product.

Article No.	Decor No.	Description	EAN	Pack/Pallet
106203605	MY058-04	Strong SPC Multilayer Plus, Thiemsburg	7640165925270	36



CROSS-SECTION

- 1. Transparent wear layer
- 2. High resolution décor film
- 3. Vinyl backing
- 4. SPC Core (Stone Polymer Composite)
- 5. Click System
- 6. Vinyl backing
- 7. Integrated noise-absorbing underlayment

BUCURA

- ◇ Natural wood look
- ◇ Can be laid on large areas (400 m²)
- ◇ Water resistant
- ◇ Only 6,5 mm mounting height
- ◇ Vinyl- and wear layer 1,2/0,55 mm
- ◇ Format 1524 x 228 mm – Large size!
- ◇ Carton content = 5 planks = 1,737 m²
- ◇ Suitable for electric underfloor heating
- ◇ Patented click connection
- ◇ Low Emission (Certified A +)
- ◇ Integrated underlay mat
- ◇ Step & room sound reduction (18 dB)
- ◇ Utilization class 32
- ◇ Phthalate and plasticizer free

Note before laying:

- Amount needed + 10% of the area.
- Subfloor clean, hard, flat, stable and firm.
- Uneven surface = max 3 mm per 1,2 m.
- Acclimatize the planks horizontally in the room for at least 48h!
- **Important:** Room temperature = floor temperature during installation
- Use temperature 18°C to 24°C.

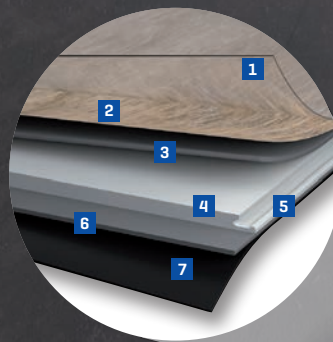
Note during laying:

- Linoleum and wood-based subfloors require decoupling with 0,2 mm PE foil!
- The planks must be properly clicked in!
- Provide expansion joints to walls and fixed objects of 6-8 mm.
- Max 20 x 20 m (400 m²) without expansion joints.
- Do not use an additional underlay mat.



The pictures may differ in color from the original product.

Article No.	Decor No.	Description	EAN	Pack/Pallet
106203606	MB2210-18	Strong SPC Multilayer Plus, Bucura	7640165925294	36



CROSS-SECTION

- 1. Transparent wear layer
- 2. High resolution décor film
- 3. Vinyl backing
- 4. SPC Core (Stone Polymer Composite)
- 5. Click System
- 6. Vinyl backing
- 7. Integrated noise-absorbing underlayment

GERDOO

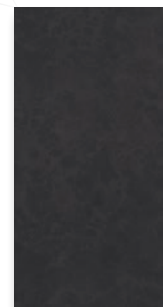
- ◇ Natural wood look
- ◇ Can be laid on large areas (400 m²)
- ◇ Water resistant
- ◇ Only 6,5 mm mounting height
- ◇ Vinyl- and wear layer 1,2/0,55 mm
- ◇ Format 935 x 465 mm – Large size!
- ◇ Carton content = 4 planks = 1,739 m²
- ◇ Suitable for electric underfloor heating
- ◇ Patented click connection
- ◇ Low Emission (Certified A +)
- ◇ Integrated underlay mat
- ◇ Step & room sound reduction (18 dB)
- ◇ Utilization class 32
- ◇ Phthalate and plasticizer free

Note before laying:

- Amount needed + 10% of the area.
- Subfloor clean, hard, flat, stable and firm.
- Uneven surface = max 3 mm per 1,2 m.
- Acclimatize the planks horizontally in the room for at least 48h!
- **Important:** Room temperature = floor temperature during installation
- Use temperature 18°C to 24°C.

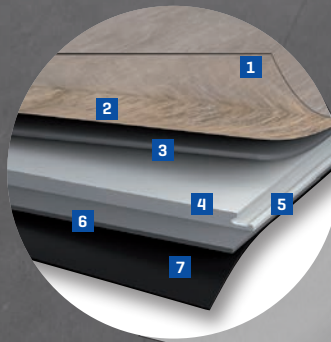
Note during laying:

- Linoleum and wood-based subfloors require decoupling with 0,2 mm PE foil!
- The planks must be properly clicked in!
- Provide expansion joints to walls and fixed objects of 6-8 mm.
- Max 20 x 20 m (400 m²) without expansion joints.
- Do not use an additional underlay mat.



The pictures may differ in color from the original product.

Article No.	Decor No.	Description	EAN	Pack/Pallet
106203610	MJ8002-2	Strong SPC Multilayer Plus, Gerdoo	7640165925300	34



CROSS-SECTION

- 1. Transparent wear layer
- 2. High resolution décor film
- 3. Vinyl backing
- 4. SPC Core (Stone Polymer Composite)
- 5. Click System
- 6. Vinyl backing
- 7. Integrated noise-absorbing underlayment

MARAGHA

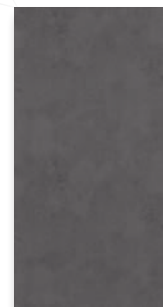
- ◇ Natural wood look
- ◇ Can be laid on large areas (400 m²)
- ◇ Water resistant
- ◇ Only 6,5 mm mounting height
- ◇ Vinyl- and wear layer 1,2/0,55 mm
- ◇ Format 935 x 465 mm – Large size!
- ◇ Carton content = 4 planks = 1,739 m²
- ◇ Suitable for electric underfloor heating
- ◇ Patented click connection
- ◇ Low Emission (Certified A +)
- ◇ Integrated underlay mat
- ◇ Step & room sound reduction (18 dB)
- ◇ Utilization class 32
- ◇ Phthalate and plasticizer free

Note before laying:

- Amount needed + 10% of the area.
- Subfloor clean, hard, flat, stable and firm.
- Uneven surface = max 3 mm per 1,2 m.
- Acclimatize the planks horizontally in the room for at least 48h!
- **Important:** Room temperature = floor temperature during installation
- Use temperature 18°C to 24°C.

Note during laying:

- Linoleum and wood-based subfloors require decoupling with 0,2 mm PE foil!
- The planks must be properly clicked in!
- Provide expansion joints to walls and fixed objects of 6-8 mm.
- Max 20 x 20 m (400 m²) without expansion joints.
- Do not use an additional underlay mat.



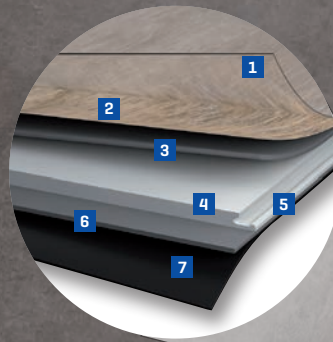
The pictures may differ in color from the original product.

Article No.	Decor No.	Description	EAN	Pack/Pallet
106203611	MY03-18	Strong SPC Multilayer Plus, Maragha	7640165925317	34



CROSS-SECTION

1. Transparent wear layer
2. High resolution décor film
3. Vinyl backing
4. SPC Core (Stone Polymer Composite)
5. Click System
6. Vinyl backing
7. Integrated noise-absorbing underlayment



TOSCANO

- ◇ Natural wood look
- ◇ Can be laid on large areas (400 m²)
- ◇ Water resistant
- ◇ Only 6,5 mm mounting height
- ◇ Vinyl- and wear layer 1,2/0,55 mm
- ◇ Format 935 x 465 mm – Large size!
- ◇ Carton content = 4 planks = 1,739 m²
- ◇ Suitable for electric underfloor heating
- ◇ Patented click connection
- ◇ Low Emission (Certified A +)
- ◇ Integrated underlay mat
- ◇ Step & room sound reduction (18 dB)
- ◇ Utilization class 32
- ◇ Phthalate and plasticizer free

Note before laying:

- Amount needed + 10% of the area.
- Subfloor clean, hard, flat, stable and firm.
- Uneven surface = max 3 mm per 1,2 m.
- Acclimatize the planks horizontally in the room for at least 48h!
- **Important:** Room temperature = floor temperature during installation
- Use temperature 18°C to 24°C.

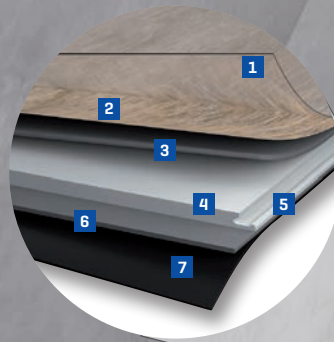
Note during laying:

- Linoleum and wood-based subfloors require decoupling with 0,2 mm PE foil!
- The planks must be properly clicked in!
- Provide expansion joints to walls and fixed objects of 6-8 mm.
- Max 20 x 20 m (400 m²) without expansion joints.
- Do not use an additional underlay mat.



The pictures may differ in color from the original product.

Article No.	Decor No.	Description	EAN	Pack/Pallet
106203612	MOA01204-03	Strong SPC Multilayer Plus, Toscano	7640165925324	34



CROSS-SECTION

1. Transparent wear layer
2. High resolution décor film
3. Vinyl backing
4. SPC Core (Stone Polymer Composite)
5. Click System
6. Vinyl backing
7. Integrated noise-absorbing underlayment

ROMANO

- ◇ Natural wood look
- ◇ Can be laid on large areas (400 m²)
- ◇ Water resistant
- ◇ Only 6,5 mm mounting height
- ◇ Vinyl- and wear layer 1,2/0,55 mm
- ◇ Format 935 x 465 mm – Large size!
- ◇ Carton content = 4 planks = 1,739 m²
- ◇ Suitable for electric underfloor heating
- ◇ Patented click connection
- ◇ Low Emission (Certified A +)
- ◇ Integrated underlay mat
- ◇ Step & room sound reduction (18 dB)
- ◇ Utilization class 32
- ◇ Phthalate and plasticizer free

Note before laying:

- Amount needed + 10% of the area.
- Subfloor clean, hard, flat, stable and firm.
- Uneven surface = max 3 mm per 1,2 m.
- Acclimatize the planks horizontally in the room for at least 48h!
- **Important:** Room temperature = floor temperature during installation
- Use temperature 18°C to 24°C.

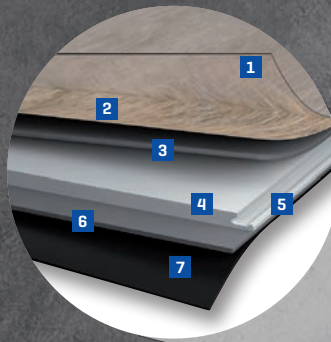
Note during laying:

- Linoleum and wood-based subfloors require decoupling with 0,2 mm PE foil!
- The planks must be properly clicked in!
- Provide expansion joints to walls and fixed objects of 6-8 mm.
- Max 20 x 20 m (400 m²) without expansion joints.
- Do not use an additional underlay mat.



The pictures may differ in color from the original product.

Article No.	Decor No.	Description	EAN	Pack/Pallet
106203613	MO2213-06	Strong SPC Multilayer Plus, Romano	7640165925331	34



CROSS-SECTION

- 1. Transparent wear layer
- 2. High resolution décor film
- 3. Vinyl backing
- 4. SPC Core (Stone Polymer Composite)
- 5. Click System
- 6. Vinyl backing
- 7. Integrated noise-absorbing underlayment

CANNSTATT

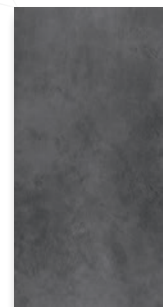
- ◇ Natural wood look
- ◇ Can be laid on large areas (400 m²)
- ◇ Water resistant
- ◇ Only 6,5 mm mounting height
- ◇ Vinyl- and wear layer 1,2/0,55 mm
- ◇ Format 935 x 465 mm – Large size!
- ◇ Carton content = 4 planks = 1,739 m²
- ◇ Suitable for electric underfloor heating
- ◇ Patented click connection
- ◇ Low Emission (Certified A +)
- ◇ Integrated underlay mat
- ◇ Step & room sound reduction (18 dB)
- ◇ Utilization class 32
- ◇ Phthalate and plasticizer free

Note before laying:

- Amount needed + 10% of the area.
- Subfloor clean, hard, flat, stable and firm.
- Uneven surface = max 3 mm per 1,2 m.
- Acclimatize the planks horizontally in the room for at least 48h!
- **Important:** Room temperature = floor temperature during installation
- Use temperature 18°C to 24°C.

Note during laying:

- Linoleum and wood-based subfloors require decoupling with 0,2 mm PE foil!
- The planks must be properly clicked in!
- Provide expansion joints to walls and fixed objects of 6-8 mm.
- Max 20 x 20 m (400 m²) without expansion joints.
- Do not use an additional underlay mat.



The pictures may differ in color from the original product.

Article No.	Decor No.	Description	EAN	Pack/Pallet
106203614	MO2232-09	Strong SPC Multilayer Plus, Cannstatt	7640165925348	34